



Receptions

1

Bedrooms

3

Bathrooms

2

Garage



Parking



Garden



 crowlandhomes

01733 212155

2 East Street, Crowland, Peterborough, PE6 0EN

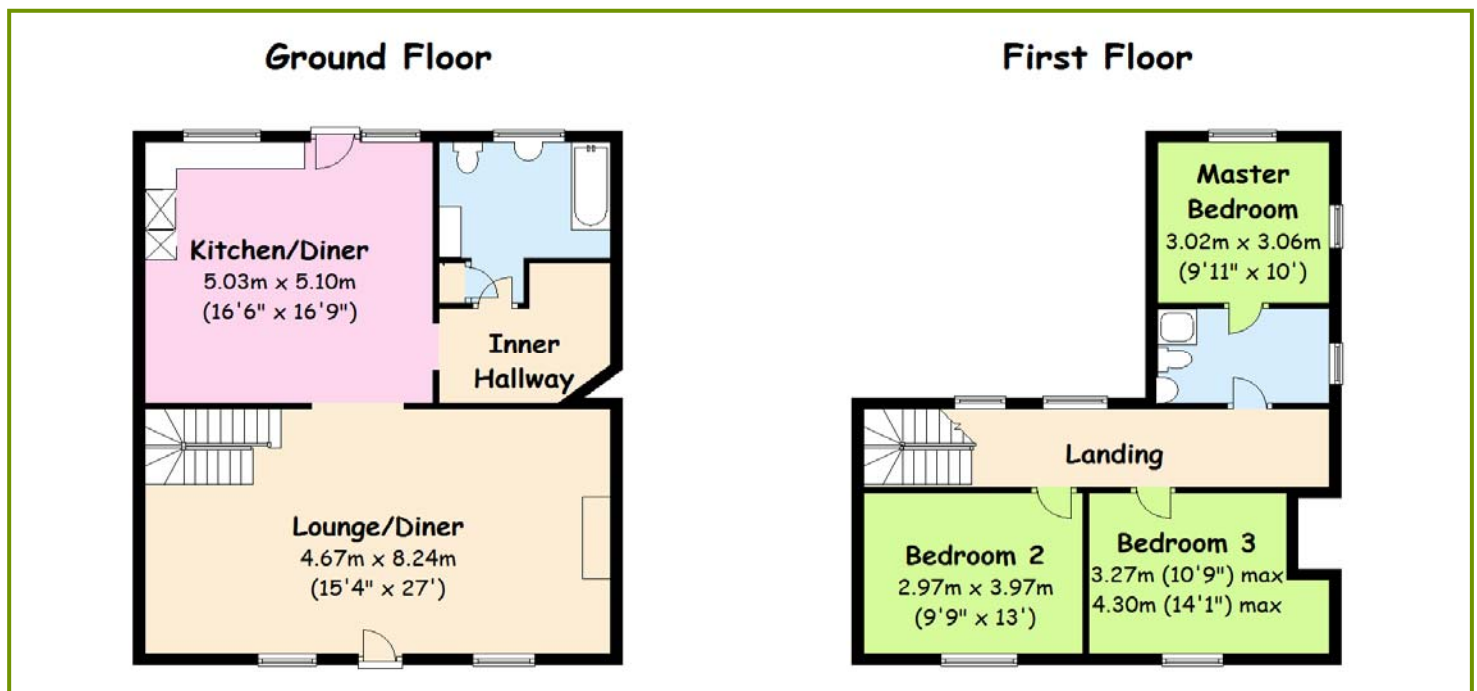
[crowlandhomes.co.uk](http://crowlandhomes.co.uk)

# Old Crown Cottage, 65 North Street, Crowland, Peterborough, PE6 0EG

Peterborough City Centre 10 miles, Spalding Town Centre 10 miles, Crowland Town Centre 250 yards

A charming, 300 year old, grade II listed, thatched cottage situated in an attractive location on North Street just out of Crowland Town Centre. It offers spacious living accommodation with both a light, bright lounge/diner to the front and a large kitchen/diner to the rear looking out onto the good size rear garden. The cottage had a new thatch roof in March 2011.

The property is situated just a five minute walk from Crowland Town Centre; a market town of which the centre is a conservation area. All local shops and services are situated nearby.



## Additional Property Information

**Outside:** A long rear garden laid with lawn, flower borders and mature shrubs and trees. Patio and wooden shed.

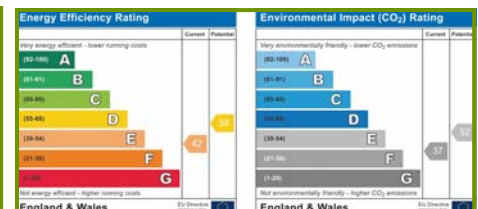
**Windows:** At front—wooden frames, single glazed. Kitchen & bathroom—wooden frames, double glazed. Other windows are upvc double glazed.

**Services:** Mains electricity, gas, water & sewerage.

**Heating:** Gas Central Heating (via Rayburn)

**Local Authority:** South Holland District Council, Council Tax Band A (pending review).

**Local Facilities:** Primary school, Secondary school, Doctors, Dentist, Post Office, Supermarket, Pubs, Restaurant, Many clubs and societies, Bus service to Peterborough & Spalding.



## Thinking of selling?

Crowland Homes offers free, no obligation property valuations.

Please contact us to arrange a convenient appointment.

Tel: 01733 212155



## Images from around Crowland



These particulars are intended only to give a brief description of the property as a guide to prospective buyers. Accordingly their accuracy is not guaranteed and neither Crowland Homes nor the vendors accept any liability in respect of their contents, they do not constitute an offer of contract for sale and prospective purchasers should satisfy themselves by inspection or otherwise as to the correctness of any statements or information in these particulars.

**Property Misdescriptions Act 1991:** Crowland Homes has not tested any apparatus, equipment, fixtures and fittings or services and so cannot verify that they are in working order or fit for the purpose. A buyer is advised to obtain verification from their solicitor or surveyor. References to the tenure of a property are based on information supplied by the seller. Crowland Homes has not had sight of the title documents. A buyer is advised to obtain verification from their solicitor.